

# UNDERCARRIAGE PARTS

## PRODUCT CATALOG

**The Leading Global Undercarriage  
Parts Supplier for  
Mini/Compact Excavators**



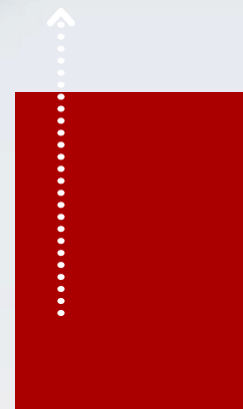
# CONTENT

<b>ADAVANTAGE</b>	<b>04</b>
<b>BOTTOM ROLLER</b>	<b>05-06</b>
<b>TOP ROLLER</b>	<b>07-08</b>
<b>SPROCKET</b>	<b>09-10</b>
<b>IDLER</b>	<b>11-12</b>
<b>TRACK CHAIN &amp; TRACK ASSY</b>	<b>13-15</b>
<b>RUBBER TRACK</b>	<b>16-17</b>
<b>OTHER ACCESSORIES</b>	<b>18</b>
<b>APPLICABLE BRAND &amp; MODEL CHART</b>	<b>19-21</b>
<b>SERVICE COVERAGE</b>	<b>22</b>



## COMPANY PROFILE

Junow Company specialized in produce and wholesale crawler undercarriage track parts including for mini and compact excavators from 0.8-8T, our parts cover from sprocket, idler, carrier roller, track roller, track shoe, track chain, track assembly to chain guard, track adjuster, recoil tension spring, bucket teeth and bucket pin etc.





## Trade Capacity

OX parts, with competitive quality, stable output and considerable after-sales service, serve for most popular manufacturers, and has its long-term partnership with great undercarriage parts dealer in the global market for a decades



**Product Designing**



**Fine Machining**



**Dimension Testing**



**Assembling**



**Oiling**



**Polishing**



**Spraying/QC**

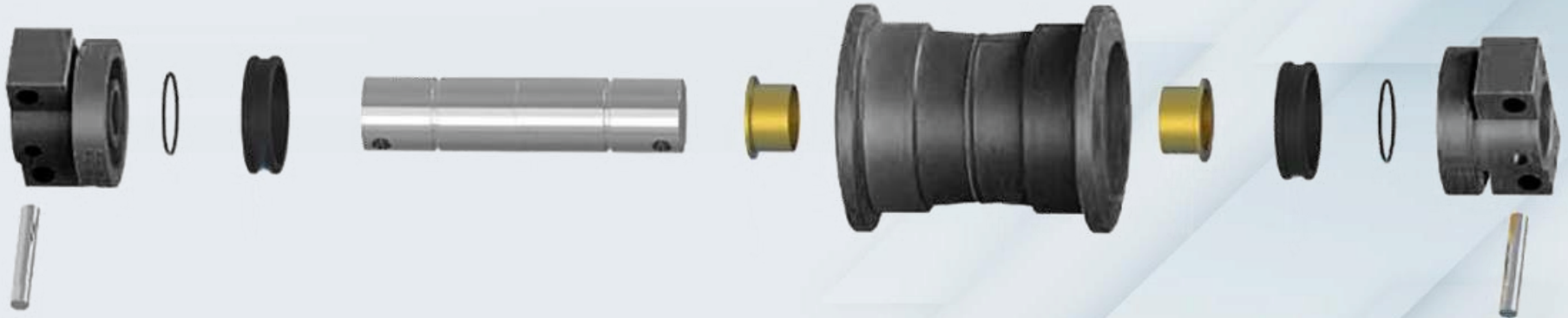


**Finished Product**

## *Advantages*

- Standard procedure management, verified by TUV
- Follow OEM quality, Maximized wear life
- Have the most vast range of parts for mini and Compact Excavators

## STRUCTURE



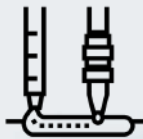
### REINFORCED FLANGES

Heat treatment process prolong the wear life (HRC 56-62)



### DUO-CONE SEAL GROUPS

Quality seal with heat-resistant and anti-cold for 0 oil leakage



### WELDED BY SUBMERGED ARC (SAW)

Better mechanical property compared to manual arc welding



### FORGED ALLOY STEEL

50MnB hardened steel with better performance in resistant to corrosion and crack

## BOTTOM ROLLER

TYPICAL MODELS



**YB201**  
YANMAR



**KX41**  
KUBOTA

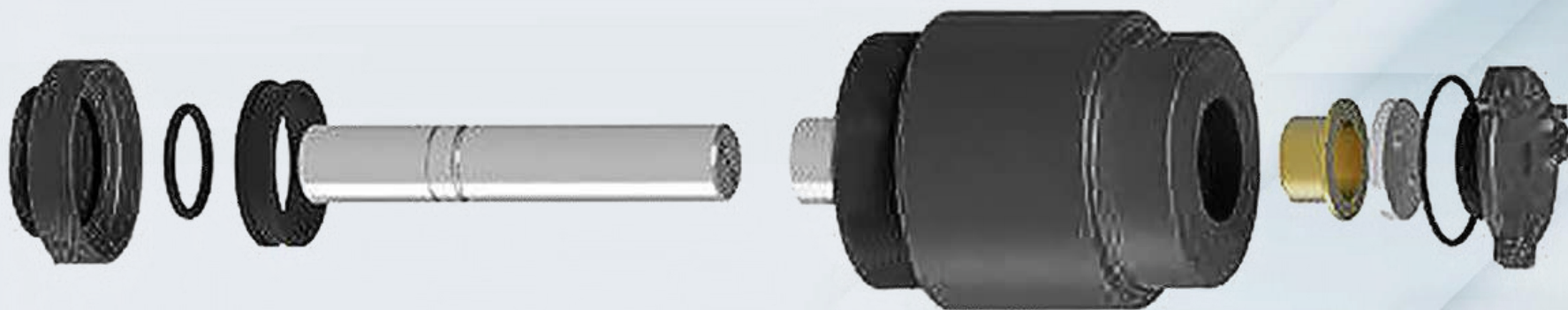


**TB68**  
TAKEUCHI



**JCB802**  
JCB

## STRUCTURE



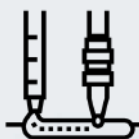
### REINFORCED FLANGES

Heat treatment process prolong the wear life (HRC 56-62)



### DUO-CONE SEAL GROUPS

Quality seal with heat-resistant and anti-cold for 0 oil leakage



### WELDED BY SUBMERGED ARC (SAW)

Better mechanical property compared to manual arc welding



### FORGED ALLOY STEEL

50MnB hardened steel with better performance in resistant to corrosion and crack

## TOP ROLLER

TYPICAL MODELS



**JCB802**

JCB



**KH90**

KUBOTA



**TB145**

TAKEUCHI



**PC20-7**

KOMATSU

## STRUCTURE



### REINFORCED TOOTH PROFILE

Quenching treatment maximize the wear life of the tooth (HRC 56-62)



### CASTED ALLOY STEEL

50MnB hardened steel with better performance in resistant to corrosion and crack



### PERFECT FITMEN

Follow genuine standard strictly to guarantee the fitment



### 24 MONTH WARRANTY

Reassuring after-sales service

## SPROCKET

TYPICAL MODELS



**TB1 08**  
TAKEUCHI



**KH60**  
KUBOTA

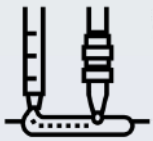


**IH155**  
IHISCE



**SK25**  
KOBELCO

## STRUCTURE



### WELDED BY SUBMERGED ARC (SAW)

Better mechanical property compared to manual arc welding



### PRECISION MACHINED

50 Optimum internal design and precision machined surface guarantee consistent lubrication



### REINFORCED SURFACE

Heat treatment process prolong the wear life (HRC 56-62)



### DUO-CONE SEAL GROUPS

Quality seal groups with heat-resistant and anti-cold for 0 oil leakage

## IDLER

### TYPICAL MODELS



**KX121-3**  
KUBOTA



X41 8  
BOBCAT



**TC16**  
Terex



**CAT303.5**  
CATERPILLAR

## STRUCTURE



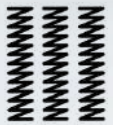
### TOP-QUALITY RAW STEEL

Surface hardness of track chain assembly is HRC50-60 for reduced wear and longer life



### FLEXIBLE OEM OPTIONS

Carry the load of the wheels and sprocket as well as extending the wear life



### 24 MONTHS WARRANTY

Strength the flexibility and protect from crack



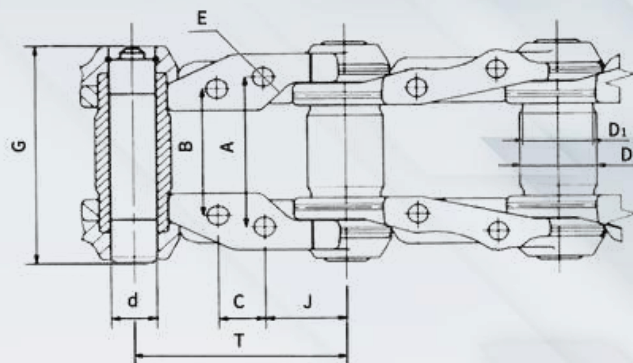
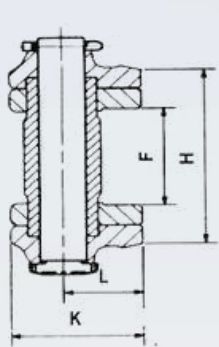
### HUGE STOCK AND TREAD PATTERN

Covers most sizes and popular patterns

# TRACK CHAIN & TRACK ASSY

## Parameters for Mini Excavator Track Link Assembly (0.8-10T)

Sequence	FL P/N	T	A	B	C	D	D <sub>1</sub>	d	E	F	G	H	J	K	L	Symbol Applicable Model
1	FLM90SE	90	/	/	/	22:2	22.2	14.2	/	27	80	59	/	46	23	SK015
2	FLM101SE1	101.6	55	55	22	32.16	32.16	19.16	10.5	35	93	76	39.8	63	37	EX22 EX25 EX30 EX35 PC20 PC30 PC35R
3	FLM101SE2	101.6	64	64	22	32.16	32.16	19.16	10.5	44	102	85	39.8	63	37	IHI30J
4	FLM101SE3	101.6	65	65	22	32.16	32.16	19.16	10.5	45	103	86	39.8	63	37	SK025 SK030 SK032 SK035
5	FLM101SE4	101.6	52	52	22	32.16	32.16	19.16	10.5	32	90	73	39.8	65	37	PC20
6	FLM101SE5	1101.6	55	55	22	33	33	21	12.5	35	97	77	39.8	70	40	YC35
7	FLM101SE6	101.6	55	55	22	32.16	32.16	19.16	10.5	34	95	72	39.8	61	31.5	TM20
8	FLM135SE1	135	99	72	43.2	41.18	41.18	23.98	12.5	45	141	105	42.5	75	40	PC60-3/5 DBC8060
9	FLM135SE2	135	99	72	43.2	41.18	41.18	23.98	12.5	48	141	108	42.5	75	40	JV65-7 YC60 SWE
10	FLM135SE3	135	99	72	43.2	41.18	41.18	23.98	12.5	46	138	106	42.5	75	40	SWE70
11	FLM135SE4	135	110	83	45	41.18	41.18	23.98	14.5	56	151	116	42.5	75	40	HD250
12	FLM135SE5	135	98.4	74.4	46	35.24	35.34	22.68	12.5	47.4	133	101.4	41	65.5	35	KY60
13	FLM135SE6	135	88	64	46	35.24	35.24	22.68	12.5	37.2	122	78.2	41	65.5	35	SWE50
14	FLM135SE7	135	93.8	63.8	46	35.24	35.24	22.68	12.5	40.4	122	87.4	41	65	35	PC40-7,SK45
15	FLM135SE8	135	104	80	46	35.24	35.24	22.68	12.5	52	139	105	41	65	35	EX40 EX45
16	FLM135SE9	135	88	58	46	35.24	35.24	22.68	12.5	34.6	116	81.6	41	65	35	KY50

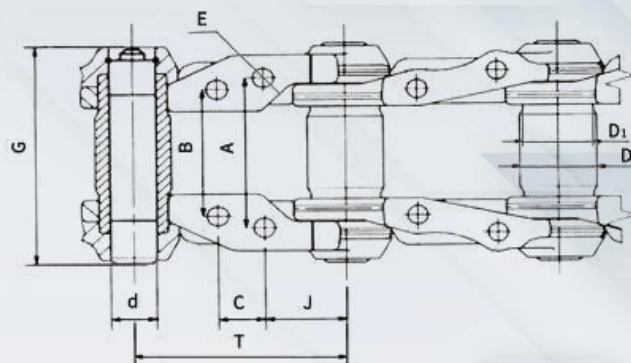
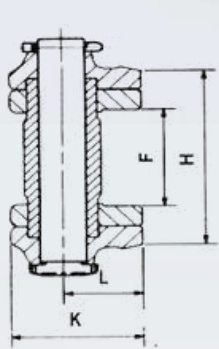


Bolt-on and Clip-on rubber pads are available

# TRACK CHAIN & TRACK ASSY

## Parameters for Mini Excavator Track Link Assembly (0.8-10T)

Sequence	FL P/N	T	A	B	C	D	D <sub>1</sub>	d	E	F	G	H	J	K	L	Symbol Applicable Model
17	FLM135SE10	135	85	55	46	35.24	35.24	22.68	12.5	31.6	113	78.6	41	65	35	PC40-5/6
18	FLM140SE1	140	86	86	52	37	37	25	12.5	57.6	140	112.4	44	70	38	RH2.5 FL4 PC75R2 DBC8085 KY70
19	FLM140SE2	140	86	86	52	42.2	42.2	28.2	14.5	51	138	116	45.5	78	42	
20	FLM140SE3	140	94	94	52	41.98	41.98	26.98	12.5	63	146	123	44	77	41	Use for Spiral Drilling Machine
21	FLM149SE1	149	84.2	84.2	57	38	38	25	12.5	52.4	126	114	46	77	41.8	CW341 CW351 ECM350 ECM450
22	FLM154SE1	154	89	73	57	41.42	41.42	24.21	14.5	45	128	104	44	74	40.5	,PC60-6 PC75 SK60
23	FLM154SE2	154	112.4	82.4	57	46.55	46.55	30.25	14.5	49.4	161	124.4	44	87	47	PC100-1/2 PC100-3 HD350
24	FLM154SE3	154	90	90	55	46.55	46.55	30.25	14.5	56	157	127	49	80	42	EX60-1/2/3/5
25	FLM160SE1	160	99	99	56	44.98	44.98	30.08	14.5	64	161	135	52	83	46	FL6
26	FLM171SE1	171.45	144.5	125.4	58.7	53.95	53.95	36.61	16.5	87.7	209	171.7	56.3	101.6	58.8	R200 K907
27	FLM171SE2	171.45	108	108	60.3	50.66	50.66	33.75	16.5	68	179	144.8	55.57	95	51	EX100/120 R900/02/04/05 CAT110 CAT120
28	FLM171SE3	171.45	108	108	60.3	50.66	50.66	33.75	14.5	68	179	144.8	55.57	95	51	L HD400 R901 R911 R912 R921 R922 R925
29	FLM171SE4	171.45	108	108	60.3	47.26	47.26	30.25	16.5	58.6	167	129	55.57	90.2	49.5	EX130 SK120 SK100
30	FLM171SE5	171.45	108	108	60.3	53.82	53.82	33.75	16.5	68	179	144.8	55.57	95	51	EX100
31	FLM171SE6	171.45	130	110.9	58.7	53.82	53.82	35	16.5	73	193	157	54.7	101.6	58.8	ZY150



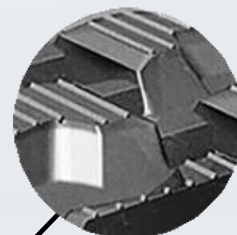
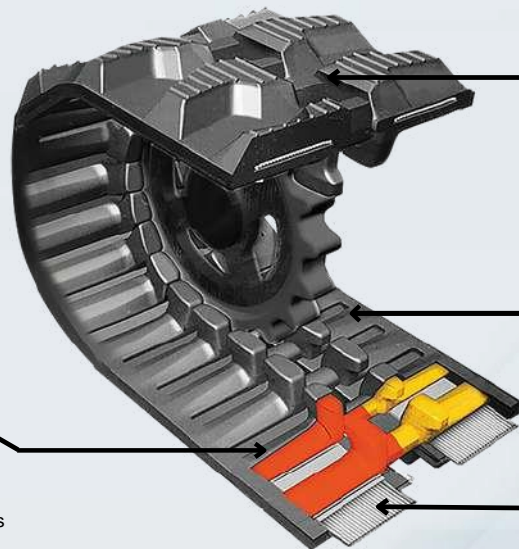
Bolt-on and Clip-on rubber pads are available

## STRUCTURE



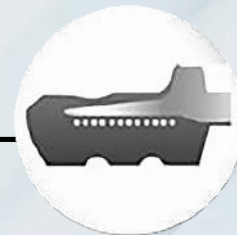
### 3S IRON CORE

- Unique, interlocking metal insert design
- Reduces vibration on machine & operator
- Lowers risk of de-tracking on cross-gradients or turns
- Patented



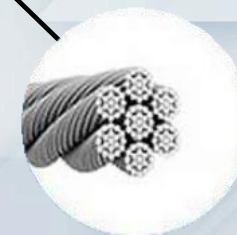
### HAULER LUG

- Stepped tread lugs shed mud
- Optimum grip
- Patented



### CURBSHIELD

- Edge cut protection
- Extends service life



### STEEL CORE WIRES

- Pre-tensioned cables for ultimate strength
- Both individual wires and cables coated to resist rust, even if the track is cut
- Even cable alignment eliminates weak spots



## TOP-QUALITY RAW STEEL

Surface hardness of track chain assembly is HRC50-60 for reduced wear and longer life



## FLEXIBLE OEM OPTIONS

Carry the load of the wheels and sprocket as well as extending the wear life



## 24 MONTHS WARRANTY

Strength the flexibility and protect from crack

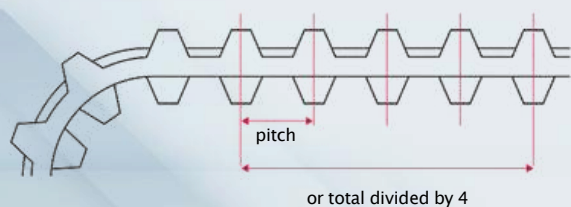


## HUGE STOCK AND TREAD PATTERN

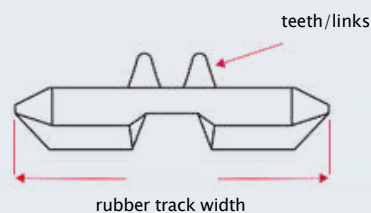
Covers most sizes and popular patterns

# RUBBER TRACK

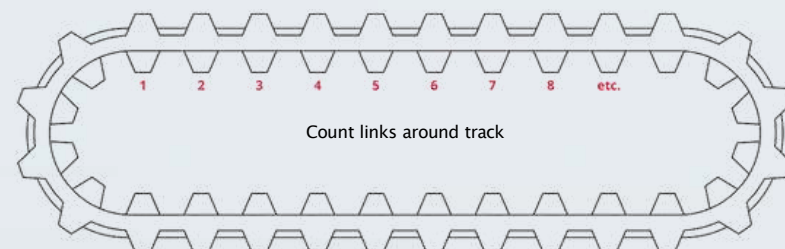
## WIDTH



## PITCH



## LINKS



## MINI EXCAVATOR RUBBER TRACK PARAMETERS

No.	WIDTH (MM)	PITCH(MM)	NO. of LINKS	No.	WIDTH (MM)	PITCH(MM)	NO. of LINKS	No.	WIDTH (MM)	PITCH(MM)	NO. of LINKS
1	150	72	30-37	25	300	52.5WK	70-86	49	400	72.5N	68-82
2	180	60	30-48	26	300	52.5R	70-86	50	400	72.5W	68-82
3	180	72	31-42	27	300	53	70-86	51	Y400	72.5	68-82
4	180	72B	31-42	28	300	55	70-86	52	400	72.5R	68-82
5	180	72R	31-42	29	300	55.5	72-84	53	K400	72.5	68-82
6	180	72K	31-42	30	K300	109	34-46	54	400	75.5	74-82
7	190	72	33-47	31	300	109N	34-46	55	400	107	35-47
8	200	72	33-47	32	300	109W	34-46	56	400	142	35-40
9	200	72R	22-47	33	320	52.5	70-92	57	K400	142	35-40
10	230	48	60-82	34	320	54	70-92	58	400	144	35-40
11	230	72	31-64	35	320	84	48-63	59	420	84	60-78
12	230	96	30-41	36	320	86	48-63	60	420	100	48-66
13	230	101	30-42	37	320	90	47-63	61	450	71	70-79
14	250	47	43-60	38	320	100	37-62	62	450	76	78-94
15	250	48.5Y	43-60	39	320	100NM	41-54	63	450	81N	68-82
16	250	52.5	43-60	40	320	106	37-46	64	450	81W	68-82
17	250	72	43-60	41	350	52.5	78-106	65	K450	83.5	70-80
18	260	96	36-44	42	350	54.5	78-106	66	450	83.5Y	50-74
19	260	109	35-46	43	350	56	70-86	67	450	84	50-74
20	280	72	56-67	44	350	56R	70-84	68	450	86	50-74
21	280	106	35-40	45	350	90	41-50	69	450	90	50-74
22	300	52.5K	68-92	46	350	75.5	72-82	70	450	100	46-55
23	300	52.5N	68-98	47	350	109	40-50	71	450	163	35-40
24	300	52.5W	68-92	48	Y 370	107	36-46				

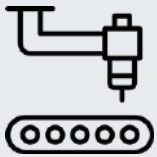


This chart is for reference only for 100% accurate specifications please refer to your machine's manual or contact the manufacturer for verification.



## MADE BY CNC PRODUCING LINE

manufactured by CNC lathe to ensure high quality and accurate size



## SURFACE TREATED

surface treated with anti-rust complete specifications adequate supply



## QUALITY AND LIFETIME

45# or 40Cr steel ensure quality and long lifetime

# OUR MINI EXCAVATOR PARTS SERVE FOR



# MODEL CHART

## FULIAN UNDERCARRIAGE APPLICABLE MODEL LIST.

NO.	Brand	Model No.								
1	AIRMAN	Airman AX1900-1 AX40	HM25 AX1900-8 AX45	HM30 AX20U	HM30S AX22	HM30S2 AX18	HM35 AX25	HM45 AX30	AX12 AX35	AX15 AX35S
2	BOB-CAT	316 334 E32 X435	320 335 E35 X442	320L 418 E42 E63	322 425 E45 E85	323 430 E50	325 E10 E55	328 E20 337	329 E25 337 Long Arm	331 Long Arm E26 341
3	CASE	CX18B Series 2 CX30C CX40BZTS	CX20B CX31 CX55B	CX20B ZTS CX31B CX57C	CX22B CX31B ZTS CX60C	CX22BZTS CX33C	CX25 CX36	CX26C CX36B	CX27B CX36B ZTS	CX27B ZTS CX37C CX40B
4	DAEWOO AND DOOSAN	DH028 DX35Z	DH50 DX55	SL55	SOLAR55	SOLAR 55V	SOLAR 55V PLUS	SOLAR 70-III	DH55	DX30Z
5	HITACHI	EX27U EX33U EX40UR EX60-1 ZX27U CG45	EX29UE EX33MU EX40UR-2 EX60-2 ZX30 CG45-3	EX30 EX35 EX40UR-2C EX60-3 ZX35 CG45C	EX30-2 EX35-1 EX45 EX60-5 ZX35U CG45D	EX30U EX35-2 EX45-2 EX60LC-2 ZX40 CG65	EX30UR-2 EX35U EX50 EX60LC-3 ZX40U CG65C	EX30UR-2C EX40 EX50U EX60LC-5 ZX50	EX30UR-3 EX40-2 EX55UR EX60URG-2 ZX50-3	EX32U EX40U EX60LC UE30 ZX50U
6	HANIX	H24 S&B 30	H27 S&B 480	H30 S&B 550	H35	H45	S&B 20	S&B330	S&B 22	S&B 25
7	HYUNDAI	R16-7 R40	R22-7 R50	R25Z-9AK R55-7	R28-7 R75-7	R35-7 R80-7	R35Z-7	R35Z-9	R35Z-9A	R36N-7
8	IHI SCE	25J 30UJ 35NX-2 45N 55N IS27G IS40G	25JX 30Z 35N 45NX 55NX IS28G IS50G	25NX 30NX-2 40J 45NX-2 55UJ IS28LX IS55LX	25NX-2 30VX 40JX 50NX 55VX IS28UX IS55UX	28J 32J 40NX 50VX 65NX IS30F CCH50T	28N 35GX 40NX-2 50Z 65UJ IS30G	30J 35J 45J 55G IS25G IS35-2	30JX 35JX 45J-2 55J IS25S IS35F-2	30NX 35NX 45UJ 55J-2 IS27F IS35G
9	JCB	802 8025ZTS 8065ZTS	802.4 8030ZTS 8080	802.5 8032Z JS70	802.7 8035 JZ70	802.7Z 8040ZTS	803 8045ZTS	803E 8050	803PLUS 8052	804 SUPER PLUS 8060
10	JOHN DEERE	JD15 JD30 JD50C ZTS JD80C	JD17D JD30G JD50D JD85D	JD17G JD35 ZTS JD60D JD85G	JD17ZTS JD35C ZTS JD70	JD25 JD35D JD70D	JD26G JD35G JD75C	JD27 ZTS JD50 JD75D	JD27C ZTS JD50G JD75G	JD27D JD50 ZTS JD80
11	KATO	HD50UR	HD205	HD250	HD307	HD307	HD308			

# MODEL CHART

## FULIAN UNDERCARRIAGE APPLICABLE MODEL LIST.

NO.	Brand	Model No.								
12	KOMATSU	PC05	PC07-2	PC10-7	PC20MR-1	PC20MRX-1	PC20MR-2	PC20R-8	PC20-5	PC25-1
		PC27R-8	PC27MR-2	PC27MR-3	PC27MRX-1	PC28	PC28UU-2	PC30-3	PC30-6	PC30MR-1
		PC30MR-2	PC30MR-3	PC30MRX-1	PC30-7	PC30R-8	PC35R-8	PC38R-8	PC35MR-2	PC35MRX-1
		PC38UU-2	PC40MR-1	PC40MR-2	PC40MR-3	PC40R-8	PC40-6	PC40-7	PC45-1	PC45R-5
		PC45MR-1	PC45MR-3	PC50UU-2	PC50MR-2	PC58UU-3	PC60-3	PC60-5	PC60-7	PC60U-5
13	KOBELCO	SK025	SK025-2	SK25	SK25SR	SK027	SK030	SK030UR	SK30UR-2	SK30UR-3
		SK030-2	SK30SR	SK30SR-2	SK30SR-3	SK032	SK035	SK035-2	SK35SR	SK35SR-2
		SK35SR-3	SK40SR	SK40SR-2	SK45SR	SK45SR-2	SK50UR-2	SK50UR-3	SK50SR-3	SK60
		SK60*III	SK60-IV	SK60-V	SK60-3	SK60-4	SK60-5	SK60UR		
14	KUBOTA	KH28L	KH51	KX61	KX61-2	KX61-3	KH66	KX71	KX71-2	KX71-3
		KH90	KX91-2	KH90	KX91-2	KH90	KX91-2	KH90	KX91-2	KH151
		KX151	KX161-2	KX161-3	KH191	KX251	KH026	KH027	KH030	KH033
		KH045	KX012	KX024	KX026	KX027	KX033	KX040	K013	K015
		K022	K025	K028	K030	K035	K038	K040	K045	U20-3
		U25-3	U30	U35	U35-3	U45	U45-3	U50-3	RX502	
15	NISSAN	N203-2	N260-2	N3	N300	N350	N250	N20	N21SS	N45
		N450-2								
16	PEL-JOB	EB12.4	EB14.4	EB25.4	EB30.4	EB150XR	EB150XT	EB150XTV	EB200XT	EB250
		EB300	EB306	EB350	EB406	EB450	EB450XT			
17	SUMITOMO	S30FXS	S50F	S60F3	S70F2	SH25J	SH20JX	LS80FJ2	S80F2	S80PX3
		S90-1	S90EJ-1	S90EJ-2	S90FX3	LS900EJ	LS900F	S90	S90FJ	S100F2
		LS1000EJ	LS1200EJ3	LS1200J	LS1400	LS1400EJ	S1400AJ	S120F	S120F1	SH30J
		SH30JX	SH32J	SH35J	SH35U	SH40	SH45J	SH50	SH55	SH55UR
		SH60	SH60B2	SH65	SH64UU	SH64UR	SH65UU	SH65UR	SH75	S160F2U
		SH75URG	SH75X-3							
18	TEREX	HR1.6	HR2.0	HR3.7	HR14	HR16	TC16	TC20	TC29	TC35
		TC35E	TC37							
19	VOLVO	EC13BXR	EC14	EC15	EC15XT	EC15XTV	EC20	EC20XT	EC20XTV	EC20BXT
		EC25	EC27C	ECR28	EC30	EC35	EC35C	ECR38	EC45	EC45 PRO
		ECR48C	EC50	EC55B	ECR58	EC55C	EC70	ECR88	ECR88PLUS	
20	YANMAR	B3	B3-2	B05	B5	B5-1	B5-2	B6	B6-1	B6-2
		B6-3	B7-5A	B08	B08-3	B12	B12-3	B14	B15	B15-3
		B17	B17-2	B17-3	B19	B22	B22-2	B25V	B27	B27-2
		B30V	B37	B37V	B50	B50V	VIO10	VIO10-2	VIO15	VIO20
		VIO30-1	VIO30-2	VIO30V	VIO40-2	VIO45	VIO50-2	VIO55	VIO70	VIO75
		VIO75A	VIO75B	SV05	SV08	SV08-1	SV08-3	C30R	C30R-1	C30R-2
		C50R	YB121	YB151	YB201	YB271	YB301	YB351	YB351-2	

# THE UC PARTS SPECIALIST

What can you get from Fulian?

- Your powerful overseas warehouse

Fulian has sufficient inventory to ensure customers' immediate delivery request.

- Your professional technical consultancy

Have authorized technician with Over 25-year experience in UC parts, can solve most of the technical problems encountered at present.

- Your trusted and reliable long-term partner

Strictly control product quality, absorb customer feedback and suggestions, establish sustainable development with customers, and help to solve after-sales problems





EL SALVADOR: AVE, ESPAÑA BO, SAN MIGUELITO, N 1430, SAN SALVADOR, SAN SALVADOR . NIT 0614-290422-103-2 No. REGISTRO 314500 CEL (503)60436015 CORREO: [JUNOW.SV@GMAIL.COM](mailto:JUNOW.SV@GMAIL.COM)

GUATEMALA: 9NA AVE. 1-25, ZONA 5 CHIMALTENANDO CEL (502)374623836 CORREO: [VENTAS@JUNOWHN.COM](mailto:VENTAS@JUNOWHN.COM)

HONDURAS: RESIDENCIAL MONTELMAR, BLOQUE 2, No. 99, QUIMISTAN SANTA BARBARA. CEL (504)87426561



JUNOW SA DE CV



JUNOW SA



JUNOW S DE RL



The Leading Global Undercarriage Parts Supplier For  
All Earth Moving Machines.



JUNOW COMPANY



JUNOWGT